

Standalone Voice Logger



GX200R / GX400R



GX800R-GX1600R

Introduction:

Standalone Telephone Voice Logger GX200/400/800/1600 series standalone telephone logger does not need to connect the computer, only connect power to record. Adopt high resistance parallel connection, can record all kinds of analog telephone, audio signaling. Store the calls info in the SD card or SATA hard disk.

There are 2/4/8/16 channels to choose. Support internet search, play, monitor, backup, multiple places to install, centralized management.

GX400 series standalone telephone logger is easy to install and operate, stable and reliable. It widely use in finance security, public security, call center, electric power and traffic area and so on which need to record the telephone conversations.

Features:

—Embedded structure, does not need to connect computer to record, only connect power to work. It is convenient, reliable and anti-virus.

—Automatically record the incoming and out call, unanswered call number, duration, conversation and so on.

—Unique audio automatic gain control(AGC) technology, make sure the audio balance on two side and voice clear.



—Unique DSP algorithm, make sure caller ID (DTMF/FSK) and DTMF key accurately receive in all kinds of line Environment.

Search Logs and Files

Voice Logger

👤 Welcome admin | ⏻ Exit

🕒 Date: 04/07/2016 Thursday

 Network 

Manage > Manage Column

Status >>

Search >>

System >>

Options...

Channels

Update Time

Change IP

Device Info

Logs >>

Users >>

Reboot >>

Current location >> System Setting >> Device Info

Device Info

Device ID : 2015122809223115516

IP Address : 192.168.1.200

MAC : 08:90:90:90:90:90

Version : 5.1.9_4

Total Channels : 4

Save Mode : SD Card

Total Space : 7.3750 GB


Free Space : 7.3125 GB

Storage Status

Voice Logger

👤 Welcome admin | ⏻ Exit

🕒 Date: 04/07/2016 Thursday

 Network 

Manage > Manage Column

Status >>

Search >>





System >>

Logs >>

Users >>

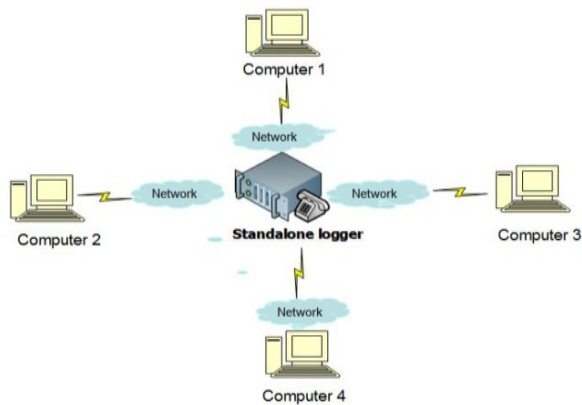
Reboot >>

Current location >> Channel Status

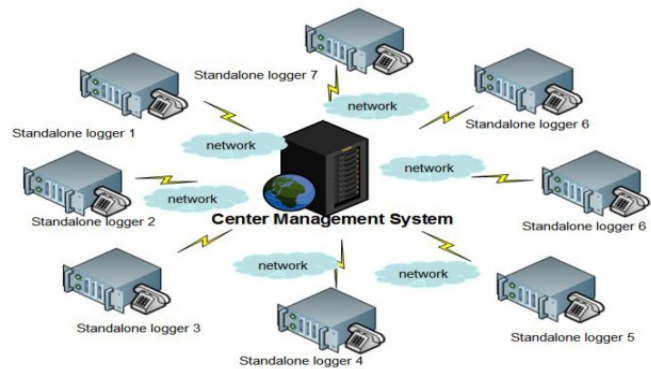
Channel	Line Number	Status	I/O	Phone Number	Start Time	Duration	Monitor	Voltage	Channel Name
1	001	Idle						52.50	
2	002	Idle						52.40	
3	003	Idle						52.20	
4	004	Idle						52.50	

Device Status

Application Connection Diagrams:



Standalone Voice Logger Controlled by Many Computers



Channel number: 2/4/8/16 channels

Port: RJ11, RJ45, Power port, USB port

Compression rate: 8 times compression (G729), 1k/s

Voice process: AGC

Frequency: 300-3400HZ

Caller ID: DTMF, FSK (BEL202)

Record mode: Press control, Key control, audio control

Power Input: AC220V, 50HZ; Output: DC5V/12V

Parameters:

- Standalone logger develops on Linux kernel
- Download speed: 20Mbps/s (LAN); it depend
- Device use C/C++ language, PC side's dll is
- WEB port 80 (http), 21 (FTP), 12345(TCP);
- Database is sqlite.
- Monitor bandwidth:1 K byte/s

Copyrights @ DC Apex Integrators (s) Pte Ltd All rights reserved

General Disclaimer

The information in this document may contain predictive statements including, without limitation, statements regarding the future financial and operating results, future product portfolio, new technology, etc. There are a number of factors that could cause actual results and developments to differ materially from those expressed or implied in the predictive statements. Therefore, such information is provided for reference purpose only and constitutes neither an offer nor an acceptance. DC Apex may change the information at any time without notice.

Product of:

DC-APEX

DC Apex Integrators (S) Pte Ltd
8 Burn Road
#15-13 Trivex
Singapore 369977

Tel: +65 6591 8833

Email: sales@dc-apex.com.sg
www.dc-apex.com.sg