

## Stand-alone PRI E1/T1 Logger device

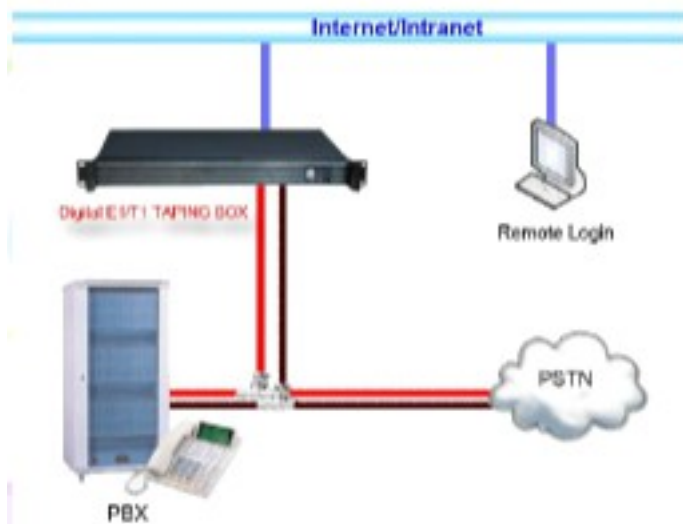


## Introduction to E1/T1 Logger Device

- Preinstalled stand-alone device.
- Taping through high impedance interface.
- Recording of E1/T1 protocol and voice.
- Flex - Rich client application. Excellent user experience. All can be done through web.

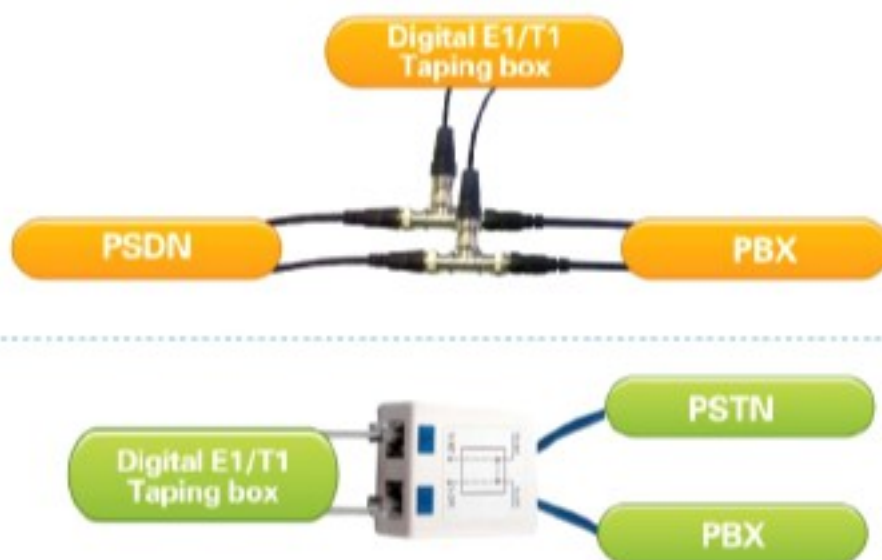


# Principle of Our Device



- High-impedance in the E1/T1 card
- By-pass tapping
- Bidirection voice combined automatically
- ISDN PRI and MFC R2 protocol supported
- Recording both the voice and calling protocol messages

## Connecting Ways





## Feature I: Stand-alone device

- Standalone device: No complex installation needed, Providing API. Turn on and it works.
- Stable and reliable: Linux system and integrated tests.
- Easy of connection: High-impedance interface, easy to connect by normal T connector



## Feature II: Web Control and Management

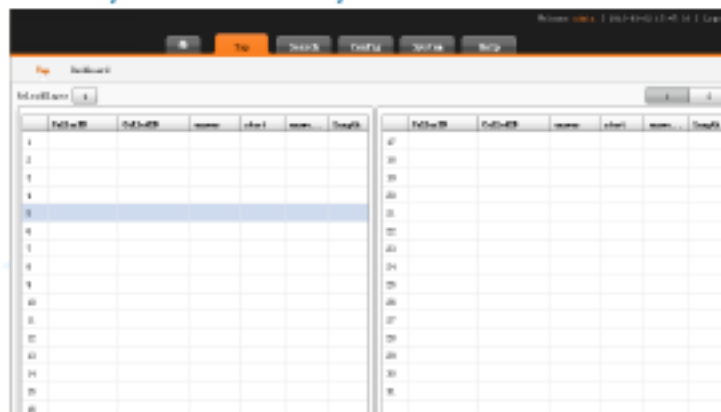
- Web control and management  
Realtime monitor of each channel. Query of monitored call detailed record and voice recording.
- Web device maintenance  
Restart, Turnoff, Setup and IP configuration, time adjustment, etc can be done remotely by web in any machine





## Feature III: Realtime Monitor

- Channel Realtime Monitor: Calling on the channels can be viewed in realtime.
- Device Realtime monitor: System storing, memory, linux service and application state can be monitored
- E1/T1 Channels monitor: Calling on all channels can be shown in realtime at anytime from anywhere.



The screenshot shows a software window titled "Realtime Monitor" with a menu bar (File, View, Search, Config, About) and a toolbar. Below the toolbar is a "Refresh" button and a "Columns" dropdown menu. The main area contains two side-by-side tables. Both tables have columns: "Channel", "Call-ID", "Source", "State", "Reason", and "Length". The left table has rows numbered 1 to 40, and the right table has rows numbered 41 to 80. The row with "Channel" 3 in the left table is highlighted.

## Main Functions

### ●Calling and voice detailed record

Recycle recording.

recording in the predefined amount of storage. Device will never be stopped.

Recording in the specified time

Filter recording: Doesn't record the specific numbers.

### ●Call monitoring

Realtime monitoring of each channel

Realtime monitoring of E1/T1 interface

Realtime monitoring of system

### ●Recording management

Easy to search CDR and voice

Convenient to tag and listen to recorded voice.



# Main Functions

- Call Detailed recording and analysis**

Calling Statistics and report

- Web Setup, Control and Management**

- Security and privacy**

Excellent role management to ensure the security of privacy of the device.

- Operating Log**

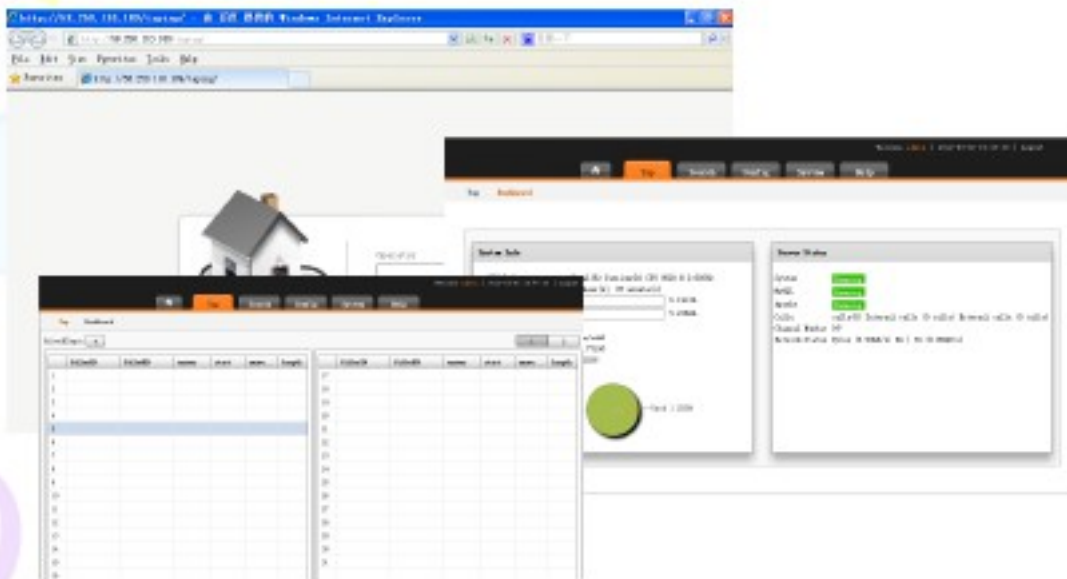
Important activities and all modification have been logged and can be checked.

## Device Models and Abilities

Model	E1/T1 Ports	HD Capacity (G)	Store ability(Months)
GX130DT	1	500G	32
GX230DT	2	500G	16
GX330DT	3	1000G	21
GX430DT	4	1000G	16



# Taping System User Interface Samples



## Technical Parameters

Protocols			
ISDN PRI	Both N. American and Standard Euro		
Specifications			
Size	48cm*29cm*4.5cm	Weight	About 6.5kg
Channels	1-2E1/T1	Interfaces	RJ48, BNC
HD Capacity	500G	Store ability	16 Months
Input Impedance	>900Ω	Power supply	110v-220v
Codes			
Storage Format	MP3	Voice Coding	G711 G729 GSM
Line Coding	AMI, HDB3	Distortion of Voice	≤2%
Clock And Restore	CCITT Rec.G.823-1998	Jitter Tolerance	CCITT Rec.G.823,G.737,G.739,G.742-1988
Working Temperature	0℃-50℃	Ratio of Signal and Noise	≥30dB

Copyrights @ DC Apex Integrators (s) Pte Ltd All rights reserved

#### General Disclaimer

The information in this document may contain predictive statements including, without limitation, statements regarding the future financial and operating results, future product portfolio, new technology, etc. There are a number of factors that could cause actual results and developments to differ materially from those expressed or implied in the predictive statements. Therefore, such information is provided for reference purpose only and constitutes neither an offer nor an acceptance. DC Apex may change the information at any time without notice.

Product of:

**\*DC APEX Integrators™**

DC Apex Integrators (S) Pte Ltd  
Block 3023 Ubi Road 3  
#03-11 UbiPlex 1  
Singapore 408663

Tel: +65 6591 8833

Email: [sales@dc-apex.com.sg](mailto:sales@dc-apex.com.sg)  
Www.[dc-apex.com.sg](http://dc-apex.com.sg)